

FENNEL
Lead by Innovation



Fennel UK

Modular Tambour Doors

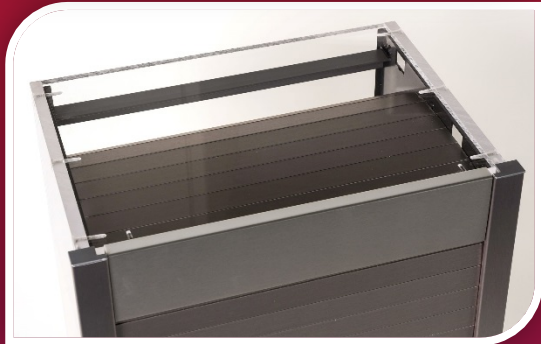
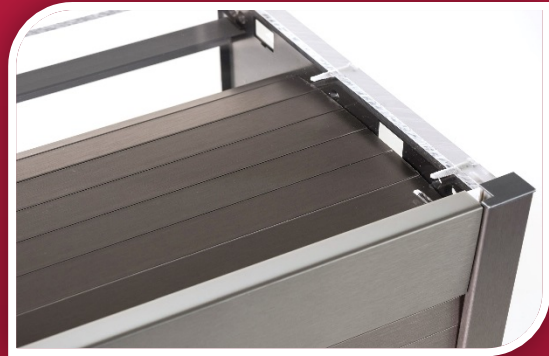


Inspired design and engineering

www.fenneluk.com

Because sometimes only white will do...





Modular Tambour Sets

As a pre-assembled cartridge style unit our modular tambour door is an easy fit, elegant, space efficient storage solution.

Also available in a 'real metal' Stainless Steel finish as pictured above.

<u>Item Code</u> <u>'White' finish</u>	<u>Item Code</u> <u>'Stainless Steel finish</u>	<u>Fits cabinet external frame size (mm)**</u>
95.7000.1800	95.7000.1600	400 wide x 1450 height
95.7000.1801	95.7000.1601	500 wide x 1450 height
95.7000.1802	95.7000.1602	600 wide x 1450 height
95.7000.1804	95.7000.1604	800 wide x 1450 height
Not Available	95.7000.1605	900 wide x 1450 height
95.7000.1803	95.7000.1603	1000 wide x 1450 height

** Designed for use with standard 18mm carcass

Minimum Internal Cabinet Dimensions required = 270 mm depth x 188mm height.
The widths are fixed, though the height may be adjusted up to a maximum of 1450mm.
Any internal shelves should be a minimum of 15mm from the front edge of the cabinet.

Fennel Modular Tambour Door Systems are a combination of inspired design and clever engineering, providing functional yet elegant solutions.

Equally suited to space limited environments our systems can be used in a variety of rooms and applications ...

Elegant kitchen solutions.....



**To close off storage compartments..
 Example fitted here in a horsebox**



..... protect technical items in the home office



**Utility Area ...
 to discreetly
 hide away in-
 built
 appliances,
 boilers or
 pipework.**



**For additional security -
 Locking handle profile
 available.
 (Non standard item, can be
 specified, lead time applies)**



Fitted in 5 easy steps

Step 1

Insert the white TZ28 fixing blocks into the four shallow holes (front and fourth from front) on the underside of the modular.



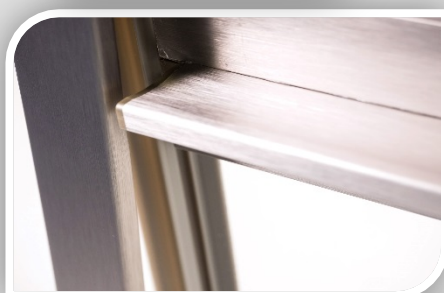
Step 2

Place the modular carefully into the cabinet and move it to the top edge of the cabinet. It is **ESSENTIAL** that the front edge of the modular is flush with the front edge of the carcass. Fix through the TZ28's with screws.



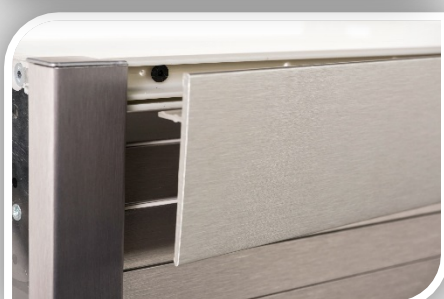
Step 3

Fix the left and right screw on tracks to the front face of the carcass gable. Use the 'lip' to locate it tight to the inside of the gable ensuring the 'lip' does not come above the modulars base shelf. If your cabinet has a base panel cut the profile so it fits just above the base panel.



Step 4

Lower the tambour $\frac{1}{4}$ - $\frac{1}{2}$ way and snap on the gable fascias. Fit the end caps onto the fascias.



Step 5

Screw on the base part of the top fascia piece ensuring the small lip is flush to the underside of your cabinet top. Finally, push the top fascia cover into the groove in the base part.

NOTE The modular is designed to fit a maximum height of 1450mm, however it will fit a reduced height, by simply cutting down the left and right 'screw on' tracks and the 'snap fit' profiles to suit your height requirement.

Important - Always cut the profiles from the bottom edge, taking care not to damage.

Open your doors to modern design possibilities.

Inspired design and engineering

Fennel UK Ltd
Samson House
10 Holme Road
Burnley
Lancashire
BB12 0BJ



Tel: +44 (0)1282 871806



Email: sales@fenneluk.com

www.fenneluk.com